

IN LOVING MEMORY



R. Clarke Campbell

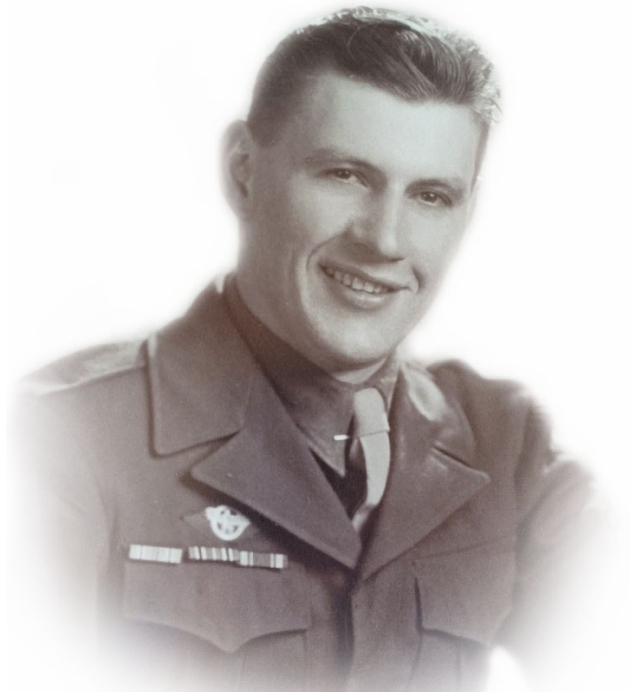
1922 - 2023



ALLEN-HALL  
MORTUARY

Condolences may be sent to the family at  
[www.allenmortuaries.com](http://www.allenmortuaries.com)

IN LOVING MEMORY



R. Clarke Campbell

1922 - 2023



ALLEN-HALL  
MORTUARY

Condolences may be sent to the family at  
[www.allenmortuaries.net](http://www.allenmortuaries.net)

In Remembrance of



# Raleigh Clarke Campbell

Born August 11, 1922 Logan, Utah  
Died April 15, 2023 Logan, Utah

## PALLBEARERS

Riley Campbell	Scott Campbell
Michael Campbell	Luke Turnblom
Brady Campbell	Jared Turnblom
Brandon Campbell	B J Hahn

## HONORARY PALLBEARERS

Curtis Campbell	Tyler Hollingshouse
Devin Campbell	Tyson Prisbrey
Cody John	

In Remembrance of



# Raleigh Clarke Campbell

Born August 11, 1922 Logan, Utah  
Died April 15, 2023 Logan, Utah

## PALLBEARERS

Riley Campbell	Scott Campbell
Michael Campbell	Luke Turnblom
Brady Campbell	Jared Turnblom
Brandon Campbell	B J Hahn

## HONORARY PALLBEARERS

Curtis Campbell	Tyler Hollingshouse
Devin Campbell	Tyson Prisbrey
Cody John	

## SERVICES

Tuesday April 25, 2023 - 11:00 AM  
Crockett Ward Chapel  
Keven Buttars, Conducting

Family Prayer . . . . . Todd Turnblom  
Organist . . . . . DeAnn Johnson  
Chorister . . . . . Sarah Campbell  
Opening Hymn . . . . . Hymn # 194  
"There Is a Green Hill Far Away"

Opening Prayer . . . . . Jeanne Brady  
Tribute / Life Sketch . . . . . Krista Hollingshouse  
Speaker . . . . . Larry Jardine  
Musical Selection . . . Brandon & Sarah Campbell, Duet  
"Come Thou Font of Every Blessing"  
Accompanied by - DeAnn Johnson

Speaker . . . . . Pete Brunson  
Remarks . . . . . Keven Buttars  
Closing Hymn . . . . . Hymn # 134  
"I Believe in Christ"

Closing Prayer . . . . . Sharlynn Campbell

## INTERMENT

Logan City Cemetery  
Dedication of Grave . . . . . Mark Campbell

## SERVICES

Tuesday April 25, 2023 - 11:00 AM  
Crockett Ward Chapel  
Keven Buttars, Conducting

Family Prayer . . . . . Todd Turnblom  
Organist . . . . . DeAnn Johnson  
Chorister . . . . . Sarah Campbell  
Opening Hymn . . . . . Hymn # 194  
"There Is a Green Hill Far Away"

Opening Prayer . . . . . Jeanne Brady  
Tribute / Life Sketch . . . . . Krista Hollingshouse  
Speaker . . . . . Larry Jardine  
Musical Selection . . . Brandon & Sarah Campbell, Duet  
"Come Thou Font of Every Blessing"  
Accompanied by - DeAnn Johnson

Speaker . . . . . Pete Brunson  
Remarks . . . . . Keven Buttars  
Closing Hymn . . . . . Hymn # 134  
"I Believe in Christ"

Closing Prayer . . . . . Sharlynn Campbell

## INTERMENT

Logan City Cemetery  
Dedication of Grave . . . . . Mark Campbell

